



28761-01K

GM POWERGLIDE REVERSE CLUTCH PISTON

H I G H P E R F O R M A N C E T R A N S M I S S I O N P A R T S

APPLICATIONS:

GM Powerglide

DETAILS:

- Made from 6061-T6 aluminum
- Machined to accept 4 frictions
- Includes inner and outer seals

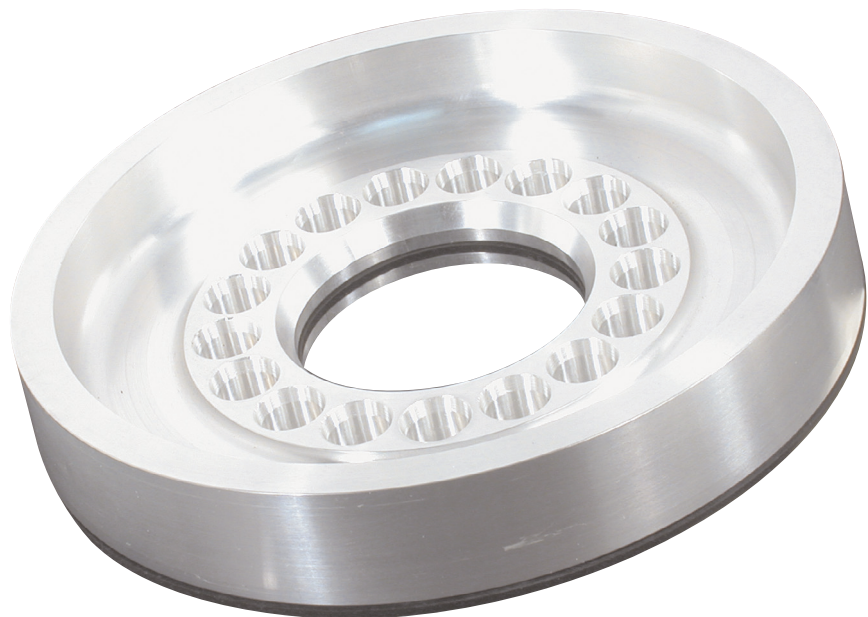
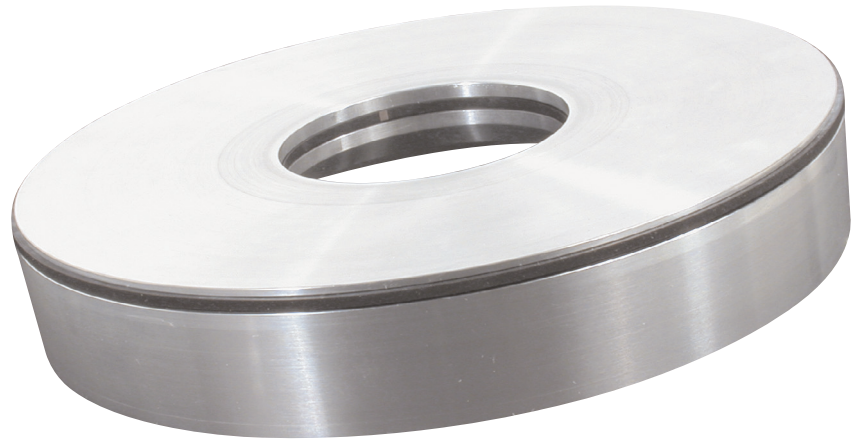
ASSOCIATED PARTS:

- **28761-01SK**, seal kit (includes inner and outer seals)
- **28709**, return spring retainer
- **28320A**, return springs (17 per package)
- **S019703K**, .070" thick Alto Kolene® steels
- **S032744**, .098" thick Alto Red Eagle® frictions

Part No.

28761-01K

Reverse Clutch Piston



PART SUMMARY

Sonnax now offers this high-quality reverse clutch piston for the GM Powerglide. The piston is designed to utilize 4 frictions and 5 steels for transbrake applications or it can be machined to accept more frictions and steels. If you wish to reduce rotating weight in circle track applications, 2 frictions (rotating) and 7 steels (non-rotating) can be used.