



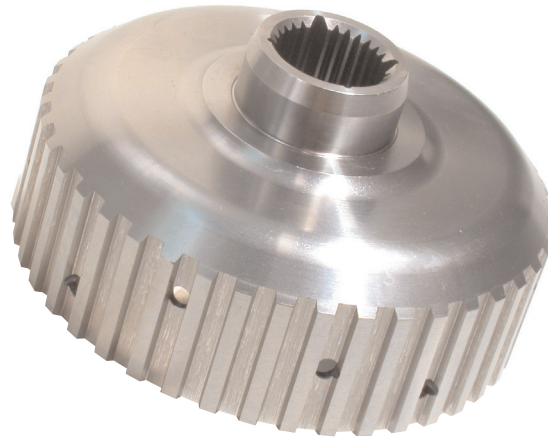
34322-01

FORWARD CLUTCH HUB

H I G H P E R F O R M A N C E T R A N S M I S S I O N P A R T S

FEATURES & BENEFITS:

- **Made from forged 1045**
- **42-tooth external spline**
- **30-tooth (26 actual teeth) internal spline pattern**



Part No.

34322-01

Forward Clutch Hub

PART SUMMARY

Sonnax now offers a replacement clutch hub **34322-01** for the GM 400, 425 & 4L80-E forward clutch assembly. This hub is made from an AISI 1045 steel forging.

Associated parts:

- **34301-078** .078" thick forward clutch thrust washer
- **34301-094** .094" thick forward clutch thrust washer