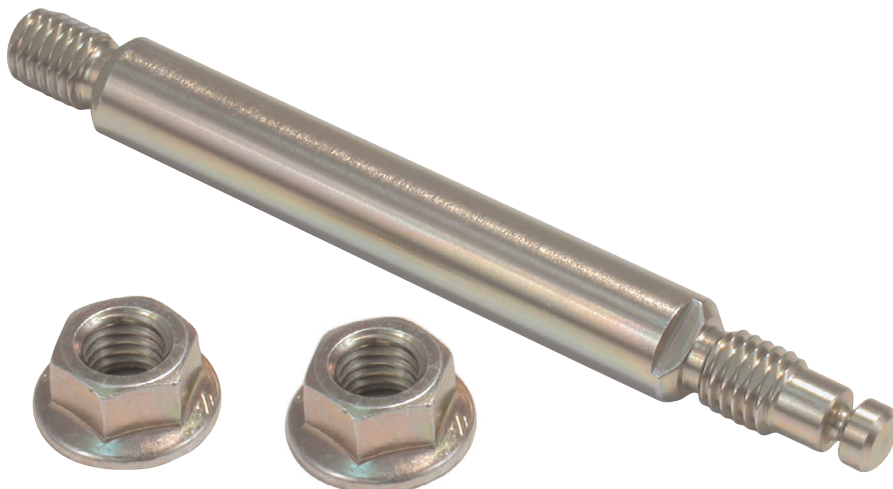
**Features & Benefits:**

- **Direct replacement**
- **Cost-effective solution to OEM shaft and lever kit**
- **Shaft and nut are zinc plated for corrosion resistance**
- **Flange of nut is serrated for better holding**

**Part No.****38511-01K***Short Manual Shaft**2 Metric Flange Nuts***PART SUMMARY**

Sonnax Manual Shaft Kit **38511-01K** is a direct replacement part for 1991-1994 4L80-E and all 400 transmissions. This kit is a more economical solution than the OEM shaft and lever kit, without the added cost for such additional components as the OEM lever and pin, shaft seal and internal hex nut, which are rarely used during the rebuild. The shaft and fastener have been zinc yellow plated for increased corrosion resistance and to help protect from road salt and other environmental contaminants. The flange face of the nuts has been serrated for better holding capability.

Note: Does not fit units with external neutral safety switch.

INSTRUCTIONS

1. Remove the retaining pin and detent lever retaining nut and manual shaft. Discard the manual shaft.
2. Insert the Sonnax manual shaft, then install the detent lever.
3. **4L80-E applications:** Reinstall the original detent lever nut.
400 applications: Use one of the nuts provided secured with Loctite® instead of the original SAE detent lever nut.
4. Reinstall the OE retaining pin.
5. When installed on the 4L80-E, two nuts will be left over. Use one to attach the manual linkage; the other can be discarded. When installed on the 400, only one nut will be left over. Use it to attach the manual linkage.