



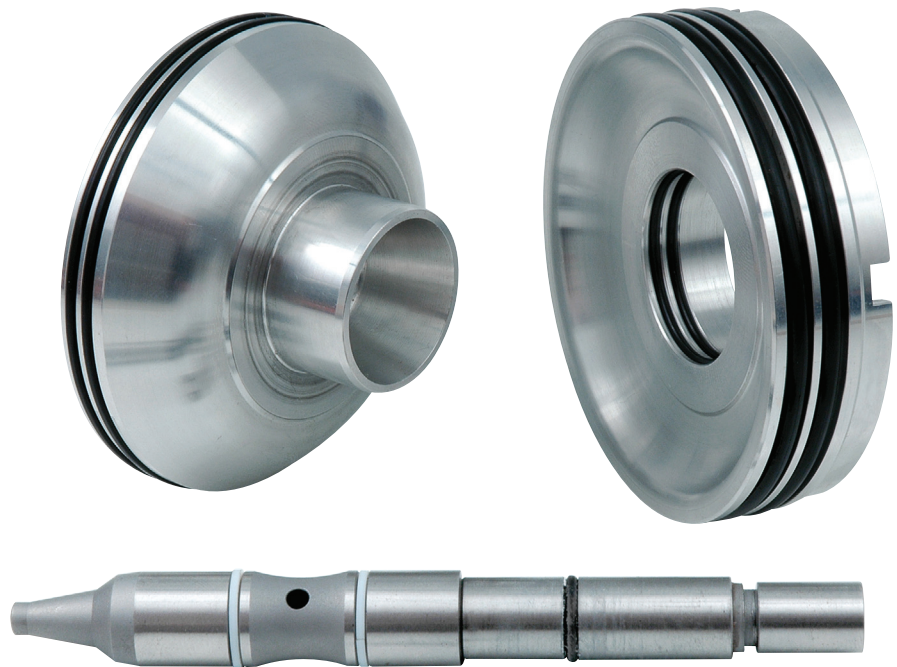
GM 4L60 & E

2ND GEAR "SUPER HOLD" SERVO

H I G H P E R F O R M A N C E T R A N S M I S S I O N P A R T S

FEATURES & BENEFITS:

- **18% more apply area than OEM Corvette servo**
- **Dual seals on 2nd apply piston and separator**
- **Servo piston and separator are made from 6061-T6 aluminum**
- **O-ring seal between pin and 2nd gear piston**
- **Two Teflon® rings seal pin to bore**
- **Servo pin is made from Chrome-moly steel**
- **Kit includes all necessary seals**



PART SUMMARY

The Sonnax 4L60/4L60-E 2nd Gear "Super Hold" Servo has 18% more apply area than the "Corvette" servo (largest OEM) and maximizes holding power in 2nd gear with more positive 1-2 and 2-3 shifts. Dual seals on the 2nd gear piston and separator ensure positive band apply/release and eliminate cross leaks, which contribute to 2-4 band and 3-4 clutch failure. This servo is the perfect option when more holding power is desired without causing excessively harsh upshifts and downshifts. The included apply pin is longer than the longest OE pin, and has added seals to reduce leakage of 3rd and 4th gear oil pressure. For the ultimate servo combination in your 4L60/4L60-E, Sonnax recommends using the 77767K 4th Gear "Super Hold" Servo with the 77911-03K 2nd Gear "Super Hold" servo.

Part No.

77911-03K

2nd Gear "Super Hold" Servo Assembly

Also available:

Part No.

77911-03SK

Replacement Seal Kit

Part No.

77767K

4th Gear "Super Hold" Servo Assembly