

COMPLAINT

SECONDARY COMPLAINT

Harsh upshifts, downshifts & forward engagements

- 2-3 flare light throttle good on hard throttle

CAUSE

A broken clutch pressure control (CPC) valve spring.

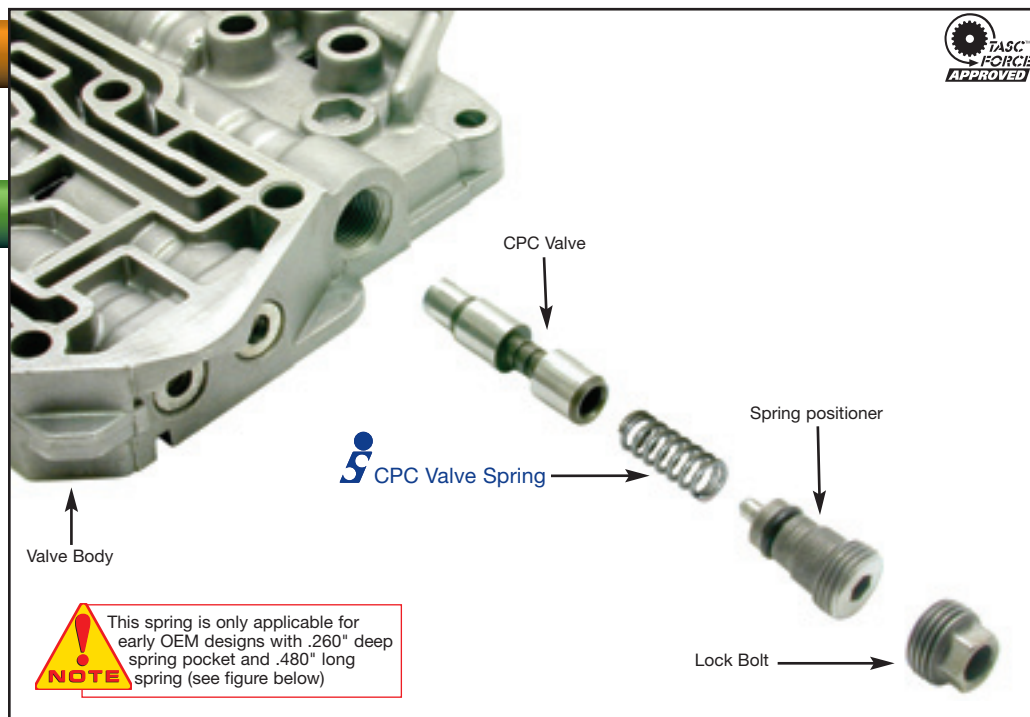
CORRECTION

This replacement spring has a larger wire diameter, thereby decreasing total spring stress by more than 25%.

1996-99 Honda Civic CPC Valve Spring

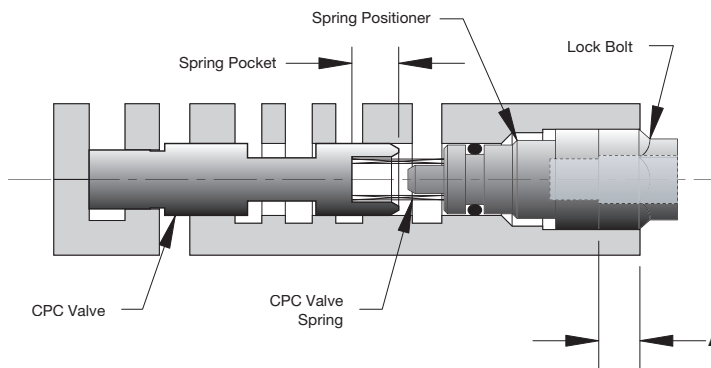
88894

1 Valve Spring



Sonnax Part Summary

Common problems in the A4RA, B4RA and M4RA transmissions are harsh upshifts, downshifts and forward engagements, while reverse engagement is fine. These problems can be caused by a broken CPC (clutch pressure control) valve spring. The spring is located in the secondary valve body and is not available from Honda. Sonnax has developed a replacement spring **88894** that has a wire diameter larger than the OEM design. This significantly reduces the stress on the spring, preventing future breakage.



Early Design = .260" spring pocket; .480" long spring

Late Design = .390" spring pocket; .625" long spring