



CHRYSLER 727

TURBINE HUB

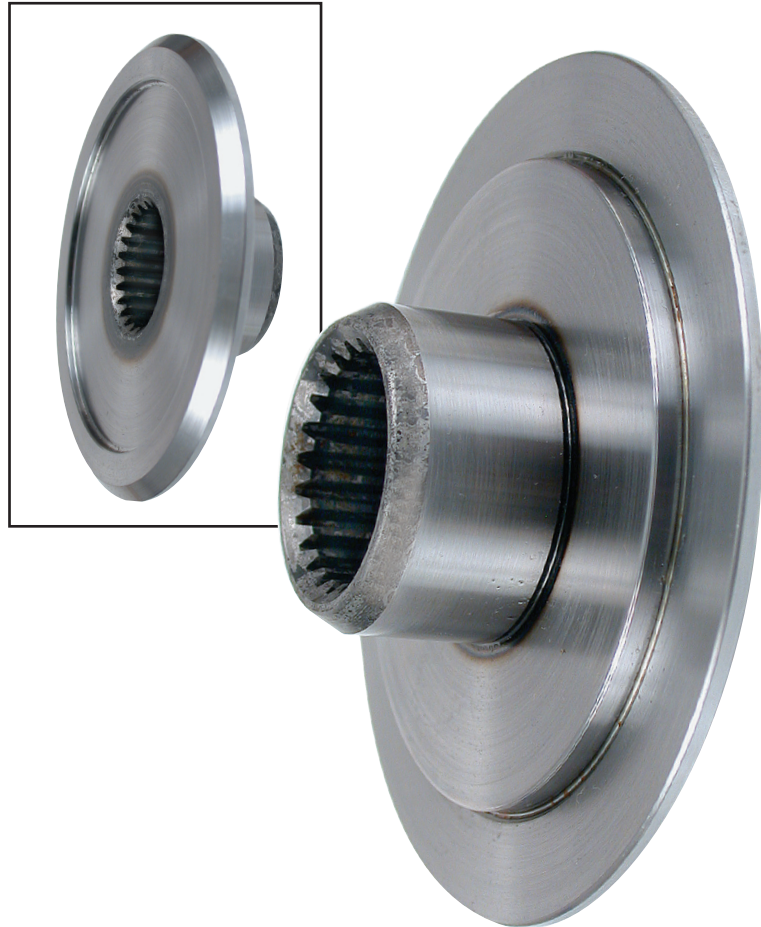
HIGH PERFORMANCE TORQUE CONVERTER PARTS

FEATURES & BENEFITS

- 24-tooth Chrysler 727 splines
- Made from SAE 1045 steel
- Hardened splines and bushing journal
- Weld-in style

ASSOCIATED PARTS

- **CH-N-1**, Thrust Bearing
- **FD-WP15-OE**, Thrust Washer, .188" thick
- **MI-N-15**, Bearing
- **MI-N-16**, Bearing Races, 2 required
- **CH-B-2**, Front Cover Bushing



Part Nos.

CH-HT-24HS*8" Opel Turbine Hub*

PART SUMMARY:

Sonnax now offers the **CH-HT-24HS** turbine hub used to convert the 8" Opel converter for use with the Chrysler 727. The **CH-HT-24HS** is made from SAE 1045 steel and has induction-hardened splines and bushing journal for increased wear resistance. Turbine hub **CV-HT-5HS**, with 30-tooth internal spline, is available to convert the 8" Opel to GM applications.

CH-HT-24HS should be added to the High Performance Parts page 352 and the Turbine Hub Details page 420 of the Torque Converter Parts Catalog Volume 6.